

## Test Report

No.: CANEC24026709404

Date: Dec 17, 2024

Page 1 of 9

Client Name: SHENZHEN DAHEINK TECHNOLOGY CO.,LTD

Client Address: HUANGMABU XIXIANG BAOAN DISTRICT SENZHEN

Sample Name: INK

Client Ref. Information: Please see attachments

The above sample(s) and information were provided by the client.

SGS Job No.: SZP24-052211

Sample Receiving Date: Nov 28, 2024

Testing Period: Nov 28, 2024 ~ Dec 04, 2024

Test Requested: Select test(s) as requested by the client.

Test Method(s): Please refer to next page(s).

Test Result(s): Please refer to next page(s).

Test Requirement	Conclusion
EU RoHS Directive (EU) 2015/863 amending Annex II to Directive 2011/65/EU - Lead, Mercury, Cadmium, Hexavalent chromium, Polybrominated biphenyls (PBB), Polybrominated diphenyl ethers (PBDE), Bis(2-ethylhexyl) phthalate (DEHP), Butyl benzyl phthalate (BBP), Dibutyl phthalate (DBP) and Diisobutyl phthalate (DIBP)	Pass

Signed for and on behalf of  
SGS-CSTC Standards Technical Services Co., Ltd. Guangzhou Branch

*Dongyu Xie*

Dongyu Xie  
Approved Signatory

scan to see the report



40CC1929



SGS-CSTC Standards Technical Services Co., Ltd.  
Guangzhou Branch

Unless otherwise agreed in writing, this document is issued by the Company subject to its General Conditions of Service printed overleaf, available on request or accessible at <https://www.sgs.com/en/Terms-and-Conditions>. Attention is drawn to the limitation of liability, indemnification and jurisdiction issues defined therein. Any holder of this document is advised that information contained hereon reflects the Company's findings at the time of its intervention only and within the limits of Client's instructions, if any. The Company's sole responsibility is to its Client and this document does not exonerate parties to a transaction from exercising all their rights and obligations under the transaction documents. This document cannot be reproduced except in full, without prior written approval of the Company. Any unauthorized alteration, forgery or falsification of the content or appearance of this document is unlawful and offenders may be prosecuted to the fullest extent of the law. Unless otherwise stated the results shown in this test report refer only to the sample(s) tested.  
**Attention: To check the authenticity of testing /inspection report & certificate, please contact us at telephone: (86-755) 8307 1443, or email: CN.Doccheck@sgs.com**

No.198, Kezhu Road, Science City, Economic & Technological Development Area, Guangzhou, Guangdong, China 510663  
中国·广东·广州高新技术产业开发区科学城科珠路198号 邮编: 510663

t (86-20) 82155555 www.sgsgroup.com.cn  
t (86-20) 82155555 sgs.china@sgs.com

Member of the SGS Group (SGS SA)

# Test Report

No.: CANEC24026709404

Date: Dec 17, 2024

Page 2 of 9

## Test Result(s):

### Test Part Description:

SN ID	Sample No.	SGS Sample ID	Description
SN1	A2	CAN24-0267094-0001.C002	Grey paste

### Remarks:

- (1) 1 mg/kg = 1 ppm = 0.0001%
- (2) MDL = Method Detection Limit
- (3) ND = Not Detected (< MDL)
- (4) "-" = Not Regulated

**EU RoHS Directive (EU) 2015/863 amending Annex II to Directive 2011/65/EU - Lead, Mercury, Cadmium, Hexavalent chromium, Polybrominated biphenyls (PBB), Polybrominated diphenyl ethers (PBDE), Bis(2-ethylhexyl) phthalate (DEHP), Butyl benzyl phthalate (BBP), Dibutyl phthalate (DBP) and Diisobutyl phthalate (DIBP)**

**Test Method:** With reference to IEC 62321-4:2013+AMD1:2017, IEC 62321-5:2013, IEC 62321-7-2:2017 and IEC 62321-12:2023, analysis was performed by ICP-OES/AAS, UV-Vis and GC-MS.

Test Item(s)	Limit	Unit(s)	MDL	A2
Lead (Pb)	1000	mg/kg	2	ND
Mercury (Hg)	1000	mg/kg	2	ND
Cadmium (Cd)	100	mg/kg	2	ND
Hexavalent Chromium (Cr(VI))	1000	mg/kg	8	ND
Polybrominated biphenyls (PBB)	1000	mg/kg	-	ND
Monobrominated biphenyl (MonoBB)	-	mg/kg	25	ND
Dibrominated biphenyl (DiBB)	-	mg/kg	25	ND
Tribrominated biphenyl (TriBB)	-	mg/kg	25	ND
Tetrabrominated biphenyl (TetraBB)	-	mg/kg	25	ND
Pentabrominated biphenyl (PentaBB)	-	mg/kg	25	ND
Hexabrominated biphenyl (HexaBB)	-	mg/kg	25	ND
Heptabrominated biphenyl (HeptaBB)	-	mg/kg	25	ND
Octabrominated biphenyl (OctaBB)	-	mg/kg	25	ND
Nonabrominated biphenyl (NonaBB)	-	mg/kg	25	ND
Decabrominated biphenyl (DecaBB)	-	mg/kg	25	ND
Polybrominated diphenyl ethers (PBDE)	1000	mg/kg	-	ND
Monobrominated diphenyl ether (MonoBDE)	-	mg/kg	25	ND
Dibrominated diphenyl ether (DiBDE)	-	mg/kg	25	ND
Tribrominated diphenyl ether (TriBDE)	-	mg/kg	25	ND
Tetrabrominated diphenyl ether (TetraBDE)	-	mg/kg	25	ND
Pentabrominated diphenyl ether (PentaBDE)	-	mg/kg	25	ND
Hexabrominated diphenyl ether (HexaBDE)	-	mg/kg	25	ND
Heptabrominated diphenyl ether (HeptaBDE)	-	mg/kg	25	ND



SGS-CSTC Standards Technical Services Co., Ltd.  
Guangzhou Branch: Science City, Economic & Technological Development Area, Guangzhou, Guangdong, China 510663

Unless otherwise agreed in writing, this document is issued by the Company subject to its General Conditions of Service printed overleaf, available on request or accessible at <https://www.sgs.com/en/Terms-and-Conditions>. Attention is drawn to the limitation of liability, indemnification and jurisdiction issues defined therein. Any holder of this document is advised that information contained hereon reflects the Company's findings at the time of its intervention only and within the limits of Client's instructions, if any. The Company's sole responsibility is to its Client and this document does not exonerate parties to a transaction from exercising all their rights and obligations under the transaction documents. This document cannot be reproduced except in full, without prior written approval of the Company. Any unauthorized alteration, forgery or falsification of the content or appearance of this document is unlawful and offenders may be prosecuted to the fullest extent of the law. Unless otherwise stated the results shown in this test report refer only to the sample(s) tested.  
**Attention: To check the authenticity of testing / inspection report & certificate, please contact us at telephone: (86-755) 8307 1443, or email: [CN.Doccheck@sgs.com](mailto:CN.Doccheck@sgs.com)**

No.198, Kezhu Road, Science City, Economic & Technological Development Area, Guangzhou, Guangdong, China 510663  
中国·广东·广州高新技术产业开发区科学城科珠路198号 邮编: 510663

t (86-20) 82155555 [www.sgsgroup.com.cn](http://www.sgsgroup.com.cn)  
t (86-20) 82155555 [sgs.china@sgs.com](mailto:sgs.china@sgs.com)

Member of the SGS Group (SGS SA)

## Test Report

No.: CANEC24026709404

Date: Dec 17, 2024

Page 3 of 9

Test Item(s)	Limit	Unit(s)	MDL	A2
Octabrominated diphenyl ether (OctaBDE)	-	mg/kg	25	ND
Nonabrominated diphenyl ether (NonaBDE)	-	mg/kg	25	ND
Decabrominated diphenyl ether (DecaBDE)	-	mg/kg	25	ND
Di-2-Ethyl Hexyl Phthalate (DEHP)	1000	mg/kg	50	ND
Benzyl Butyl Phthalate (BBP)	1000	mg/kg	50	ND
Dibutyl Phthalate (DBP)	1000	mg/kg	50	ND
Diisobutyl Phthalate (DIBP)	1000	mg/kg	50	ND

### Notes:

- (1) The maximum permissible limit is quoted from RoHS Directive (EU) 2015/863.
- (2) IEC 62321 series is equivalent to EN 62321 series.
- (3) The restriction of DEHP, BBP, DBP and DIBP shall apply to medical devices, including in vitro medical devices, and monitoring and control instruments, including industrial monitoring and control instruments, from 22 July 2021.

Unless otherwise stated, the decision rule for conformity reporting is based on Binary Statement for Simple Acceptance Rule ( $w=0$ ) stated in ILAC-G8:09/2019.



Unless otherwise agreed in writing, this document is issued by the Company subject to its General Conditions of Service printed overleaf, available on request or accessible at <https://www.sgs.com/en/Terms-and-Conditions>. Attention is drawn to the limitation of liability, indemnification and jurisdiction issues defined therein. Any holder of this document is advised that information contained hereon reflects the Company's findings at the time of its intervention only and within the limits of Client's instructions, if any. The Company's sole responsibility is to its Client and this document does not exonerate parties to a transaction from exercising all their rights and obligations under the transaction documents. This document cannot be reproduced except in full, without prior written approval of the Company. Any unauthorized alteration, forgery or falsification of the content or appearance of this document is unlawful and offenders may be prosecuted to the fullest extent of the law. Unless otherwise stated the results shown in this test report refer only to the sample(s) tested.  
**Attention: To check the authenticity of testing /inspection report & certificate, please contact us at telephone: (86-755) 8307 1443, or email: CN.Doccheck@sgs.com**

SGS-CSTC Standards Technical Services Co., Ltd.  
 Guangzhou Branch / 广州分公司

No.198, Kezhu Road, Science City, Economic & Technological Development Area, Guangzhou, Guangdong, China 510663  
 中国·广东·广州高新技术产业开发区科学城科珠路198号 邮编: 510663

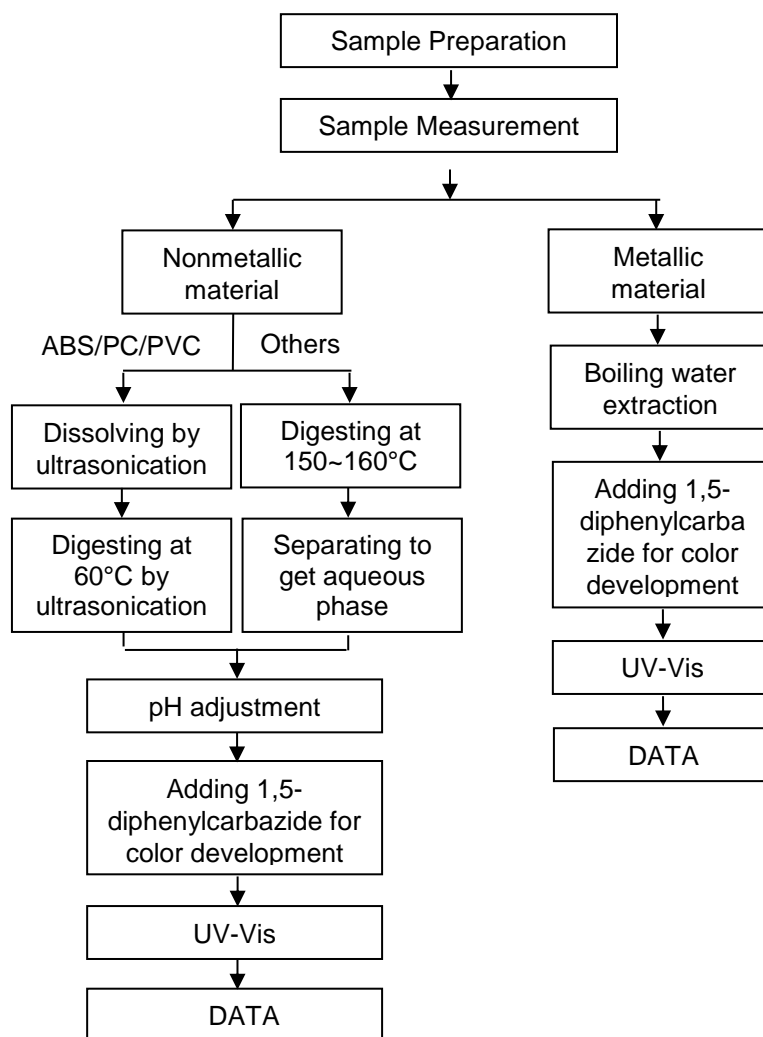
t (86-20) 82155555 www.sgsgroup.com.cn  
 t (86-20) 82155555 sgs.china@sgs.com

### Elements Testing Flow Chart

These samples were dissolved totally by pre-conditioning method according to below flow chart.



### Hexavalent Chromium (Cr(VI)) Testing Flow Chart





## Test Report

### ATTACHMENTS

No.: CANEC24026709404

Date: Dec 17, 2024

Page 6 of 9

### PBB/PBDE/Phthalates Testing Flow Chart



SGS-CSTC Standards Technical Services Co., Ltd.  
Guangzhou Branch Technical Laboratory

Unless otherwise agreed in writing, this document is issued by the Company subject to its General Conditions of Service printed overleaf, available on request or accessible at <https://www.sgs.com/en/Terms-and-Conditions>. Attention is drawn to the limitation of liability, indemnification and jurisdiction issues defined therein. Any holder of this document is advised that information contained hereon reflects the Company's findings at the time of its intervention only and within the limits of Client's instructions, if any. The Company's sole responsibility is to its Client and this document does not exonerate parties to a transaction from exercising all their rights and obligations under the transaction documents. This document cannot be reproduced except in full, without prior written approval of the Company. Any unauthorized alteration, forgery or falsification of the content or appearance of this document is unlawful and offenders may be prosecuted to the fullest extent of the law. Unless otherwise stated the results shown in this test report refer only to the sample(s) tested.  
Attention: To check the authenticity of testing /inspection report & certificate, please contact us at telephone: (86-755) 8307 1443, or email: [CN.Doccheck@sgs.com](mailto:CN.Doccheck@sgs.com)

No.198, Kezhu Road, Science City, Economic & Technological Development Area, Guangzhou, Guangdong, China 510663  
中国·广东·广州高新技术产业开发区科学城科珠路198号 邮编: 510663

t (86-20) 82155555 [www.sgsgroup.com.cn](http://www.sgsgroup.com.cn)  
t (86-20) 82155555 [sgs.china@sgs.com](mailto:sgs.china@sgs.com)

Member of the SGS Group (SGS SA)

## Test Report

No.: CANEC24026709404

Date: Dec 17, 2024

Page 7 of 9

Attachment:

Remark: sampling Oil Color Number:

110、110M、102、102M、104、104M、105、200、201、202、203、204、203T、203L、206、206L、209、209T、300、301、302、302T、302L、304、305、305T、305L、306、307、307T、308、3028、3028T、3028L、3038、3068、401、401T、403、404、404L、408、409、500、501、501M、501L、503、504、601、601T、602、603、0011、0012、0013、0014、0021、0022、0023、0024、0025、4color red、4color yellow、4color blue、4color black、4color gloss、877C、9001、9002、9003、9004、9005、9006、9007、9008、9010、9031、191、131、133、134、159、160、110N、102N、104N、105N、200N、201N、202N、203N、205N、206N、209N、300N、301N、302N、303N、305N、306N、307N、3077N、308N、309N、3028N、3038N、3068N、401N、408N、409N、406N、500N、501N、503N、504N、601N、877N、9001N、9002N、9003N、9004N、9005N、9006N、9007N、9008N、9010N、9031N、0013N、0014N、0015N、0016N、0017N、0018N、0019N、0020N、1828N、110E、102E、104E、105E、201E、203E、204E、206E、301E、302E、3028E、3038E、300E、305E、3068E、3077E、306E、307E、308E、401E、406E、408E、409E、501E、601E、602E、877E、9001E、9002E、9003E、9004E、9007E、9008E、0012E、0013E、131E、159E、134E、209E、PP-112E、S-AC2207dumb pulp、pearly lustre、XD1801、XD1802、XD1803、XD1804、XD1805、XD1806、XD1807、XD1808、XD1809、XD1810、XD1811、XD1812、XD1813、XD1814、XD1815、XD1816、XD1817、XD1818、XD1819、XD1820、XD1821、XD1822、XD1823、XD1824、XD1825、XD1826、XD1827、XD1828、XD1829、XD1830、XD1831、XD1832、XD1833、XD1834、XD1835、XD1836、XD1837、XD1838、XD1839、XD1840、XD1841、XD1842、XD1843、XD1844、XD1845、XD1846、XD1847、XD1848、XD1849、XD1850、XD1851、XD1852、XD1853、XD1854、XD1855、XD1856、XD1857、XD1858、XD1859、XD1860、XD1861、XD1862、XD1863、XD1864、XD1865、XD1866、XD1867、XD1868、XD1869、XD1870、XD1871、XD1872、XD1873、XD1874、XD1875、XD1876、XD1877、XD1878、XD1879、XD1880、XD1881、XD1882、XD1883、XD1884、XD1885、XD1828A、XD1839A、XD1888、XD1889

Mixture

Above color number used for the following series:

680 series、680withN series、680withE series、680withEN series、ABS series、ABSwithN series、ABSwithE series、ABSwithEN series、PBS series、PBSwithF series、PBSwithN series、PBSwithE series、PBSwithEN series、MBS series、MBS withNseries、MBS withEseries、MBS withENseries、PET series、PETwithN series、PETwithE series、PETwithEN series、SY series、PUV series、PUVwithN series、PUVwithE series、PUVwithEN series、610 series、610withN series、610withE series、610withEN series、660 series、660withE series、EP series、EPwithN series、EPwithE series、EPwithEN series、600 series、600withN series、600withE series、600withEN series、900 series、900withE series、900withS series、SG series、PPE series、SP series、SPwithN series、690 series、690withN series、690withE series、690withK series、690withEN series、180 series、180withF series、PBSwithF series、DPE series、DB series、HP series、HAC series、ME series、UVA series、UVB series、UVC series、UVY series、SUV series、LUV series、DUV series、630 series、670 series、PETL series、MK series、ME series、980 series、PP series、PPwithE series、UV series、EN series、JP series、JPA series、JPAwithN series、JPAwithE series、JPAwithEN series、JPM series、JPMwithEN series、MM series、MMwithE series、MMwithEN series、SPV series、SPV withNseries、SPVwithE series、SPVwithEN series、SR series、SRwithN series、SRwithE series、SRwithEN series、PD series、LB series、PE series、650 series、620 series、620withN



SGS-CSTC Standards Technical Service Co., Ltd.  
Guangzhou Branch: Standards Technical Laboratory

Unless otherwise agreed in writing, this document is issued by the Company subject to its General Conditions of Service printed overleaf, available on request or accessible at <https://www.sgs.com/en/Terms-and-Conditions>. Attention is drawn to the limitation of liability, indemnification and jurisdiction issues defined therein. Any holder of this document is advised that information contained hereon reflects the Company's findings at the time of its intervention only and within the limits of Client's instructions, if any. The Company's sole responsibility is to its Client and this document does not exonerate parties to a transaction from exercising all their rights and obligations under the transaction documents. This document cannot be reproduced except in full, without prior written approval of the Company. Any unauthorized alteration, forgery or falsification of the content or appearance of this document is unlawful and offenders may be prosecuted to the fullest extent of the law. Unless otherwise stated the results shown in this test report refer only to the sample(s) tested.  
Attention: To check the authenticity of testing / inspection report & certificate, please contact us at telephone: (86-755) 8307 1443, or email: [CN.Doccheck@sgs.com](mailto:CN.Doccheck@sgs.com)

No.198, Kezhu Road, Science City, Economic & Technological Development Area, Guangzhou, Guangdong, China 510663  
中国·广东·广州高新技术产业开发区科学城科珠路198号 邮编: 510663

t (86-20) 82155555 [www.sgsgroup.com.cn](http://www.sgsgroup.com.cn)  
t (86-20) 82155555 [sgs.china@sgs.com](mailto:sgs.china@sgs.com)

## Test Report

No.: CANEC24026709404

Date: Dec 17, 2024

Page 8 of 9

series、620withE、series、620withEN series、600A series、70 series、71 series、71withN series、71withE series、72 series、72withN series、72withE series、73 series、73withN series、73withE series、75 series、75withN series、75withE series、76 series、76withN series、76withE series、77 series、77withN series、77withE series、78 series、78withN series、78withE series、79 series、79withN series、79withE series、80 series、80withN series、80withE series、90 series、90withE series、91 series、91withN series、91withE series、92 series、92withN series、92withE series、93 series、93withN series、93withE series、95 series、95withN series、95withE series、96 series、96withN series、96withE series、97 series、97withN series、97withE series、98 series、98withN series、98withE series、99 series、99withN series、99withE series、990 series、990Y series、SA series、80 series、82 series、86 series、88 series、IP series、LUV series、JPA-501EN/M series、ABS-104H/G series、7224series、7226series、7261series、7132series、8103series、6993series、SR-511099、SR-511099B、SR-414406、91-S-5000series、92-S-5000series、91-PET-5000series、91-PET-501series、91-EP-501series、91-EP-5000series、91-PC-5000series、91-SG-5000series、91-SG-501series、48-7224 series、69-7224 series、1210-7224 series、7000 series、ZD9877 series、20/254 series、7501NP series、7503NP series、7504NP series



Unless otherwise agreed in writing, this document is issued by the Company subject to its General Conditions of Service printed overleaf, available on request or accessible at <https://www.sgs.com/en/Terms-and-Conditions>. Attention is drawn to the limitation of liability, indemnification and jurisdiction issues defined therein. Any holder of this document is advised that information contained hereon reflects the Company's findings at the time of its intervention only and within the limits of Client's instructions, if any. The Company's sole responsibility is to its Client and this document does not exonerate parties to a transaction from exercising all their rights and obligations under the transaction documents. This document cannot be reproduced except in full, without prior written approval of the Company. Any unauthorized alteration, forgery or falsification of the content or appearance of this document is unlawful and offenders may be prosecuted to the fullest extent of the law. Unless otherwise stated the results shown in this test report refer only to the sample(s) tested.  
Attention: To check the authenticity of testing /inspection report & certificate, please contact us at telephone: (86-755) 8307 1443, or email: [CN.Doccheck@sgs.com](mailto:CN.Doccheck@sgs.com)

SGS-CSTC Standards Technical Services Co., Ltd.  
Guangzhou Branch / Guangzhou Technical Laboratory

No.198, Kezhu Road, Science City, Economic & Technological Development Area, Guangzhou, Guangdong, China 510663  
中国·广东·广州高新技术产业开发区科学城科珠路198号 邮编: 510663

t (86-20) 82155555 [www.sgsgroup.com.cn](http://www.sgsgroup.com.cn)  
t (86-20) 82155555 [sgs.china@sgs.com](mailto:sgs.china@sgs.com)



## Test Report

No.: CANEC24026709404

Date: Dec 17, 2024

Page 9 of 9

Sample Photo:



SGS authenticate the photo on original report only

\*\*\* End of Report \*\*\*



SGS-CSTC Standards Technical Services Co., Ltd.  
Guangzhou Branch Technical Laboratory

Unless otherwise agreed in writing, this document is issued by the Company subject to its General Conditions of Service printed overleaf, available on request or accessible at <https://www.sgs.com/en/Terms-and-Conditions>. Attention is drawn to the limitation of liability, indemnification and jurisdiction issues defined therein. Any holder of this document is advised that information contained hereon reflects the Company's findings at the time of its intervention only and within the limits of Client's instructions, if any. The Company's sole responsibility is to its Client and this document does not exonerate parties to a transaction from exercising all their rights and obligations under the transaction documents. This document cannot be reproduced except in full, without prior written approval of the Company. Any unauthorized alteration, forgery or falsification of the content or appearance of this document is unlawful and offenders may be prosecuted to the fullest extent of the law. Unless otherwise stated the results shown in this test report refer only to the sample(s) tested.

Attention: To check the authenticity of testing / inspection report & certificate, please contact us at telephone: (86-755) 8307 1443, or email: [CN.Doccheck@sgs.com](mailto:CN.Doccheck@sgs.com)

No.198, Kezhu Road, Science City, Economic & Technological Development Area, Guangzhou, Guangdong, China 510663  
中国·广东·广州高新技术产业开发区科学城科珠路198号 邮编: 510663

t (86-20) 82155555 [www.sgsgroup.com.cn](http://www.sgsgroup.com.cn)  
t (86-20) 82155555 [sgs.china@sgs.com](mailto:sgs.china@sgs.com)

Member of the SGS Group (SGS SA)